

New Acrylic Block

Design connects ...

... X-BLOCK - Interior decorating made easy.



The building block that individualizes designing and self-made transparent walls for any room in your home or business.

The unique connection system allows you to easily install the

wall with no mess or cleanup.

Eliminates the need of mortar... Save time, money and labour.

Easy to install. Do it your self at your convenience.

Add walls without losing natural light.

New Product For 2005



Clear
200mm x 200mm
(Gloss or Silk Finish)

Pack of 5 RRP
£19.99



Orange 200mm x 200mm
(Gloss or Silk Finish)

Pack of 5 RRP
£24.99



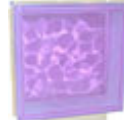
Turquoise 200mm x 200mm
(Gloss or Silk Finish)

Pack of 5 RRP
£24.99



Azure 200mm x 200mm
(Gloss or Silk Finish)

Pack of 5 RRP
£24.99



Violet 200mm x 200mm
(Gloss or Silk Finish)

Pack of 5 RRP
£24.99



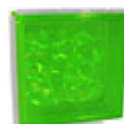
Ocean Blue 200mm x 200mm
(Gloss or Silk Finish)

Pack of 5 RRP
£24.99



Yellow 200mm x 200mm
(Gloss or Silk Finish)

Pack of 5 RRP
£24.99



Apple Green 200mm x 200mm
(Gloss or Silk Finish)

Pack of 5 RRP
£24.99



Burgundy 200mm x 200mm
(Gloss or Silk Finish)

Pack of 5 RRP
£24.99

Available in Gloss or Silk Finish

Accessories

380193	Short Sealing Section	Sold in bags of 20 195mm long	RRP £2.99
380198	Long Sealing Section	Sold in bags of 2 x 4.2m long	RRP £5.29
380207	Edge trim 1.8m	Aluminium Frame Section tongue 1.8m long	RRP £7.99
380208	Edge trim 1.8m	Aluminium Frame Section groove 1.8m long	RRP £7.99
380209	Joints for frame sections	Use to extend the frame beyond 1.8m	RRP £3.99
380210	External Corner Trims	Sold in sets of four	RRP £4.75
380211	Internal Corner Trims	Sold in sets of four	RRP £4.75



Aluminium Frame
Section groove



Joints for
frame sections





1 Cut a groove and tongue section each to the width and height of your construction project, using this simple formula: Length of the frame section = number of X-BLOCKS x 200 mm + 2 mm **Please note:** The groove and tongue pieces must be capped at 45° angles at both ends of the frame sections – as shown in



3 To provide sufficient space in the corners for the long sealing sections, you should "split" the vertical sealing sections on the narrow side at both ends with a sharp crafts or carpet knife.
Hint: You will achieve the best fit at about 3 millimeters – as shown in the photo.



5 Now place your first X- BLOCK. Please note that the block marking • is pointing at a right angle to the frame section. Then mount the two short sealing sections – with the broad side facing outwards – onto the X- BLOCK before continuing with the next block.



Tip Do you need to remove just one block or several blocks at once?
No problem: Insert the soft-mantled handles of the combination pliers into the grooves in the gap between X-BLOCKS. Simply lever the block with gentle pressure from its position.



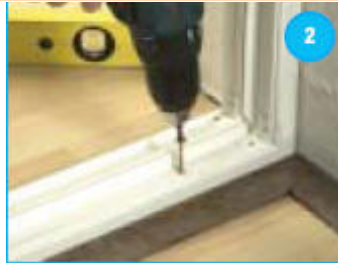
8 Now mount the vertically split sealing section on the blocks and push the frame section with the last 90°-connecting piece into the lower connecting piece. Firmly press the section from the bottom upwards against the blocks. **Hint:** Spread the loops of the 90°-connecting piece with a screwdriver so that it latches more easily into the upper frame section.



10 Remove the protective foils attached on both sides from the X-BLOCKS and the frame sections.
Hint: We recommend a microfiber cloth and Pronto Clean & Dust cleaner for cleaning and care. **Finished!**



11 After you have sprayed about one third of the groove cross section with X-BLOCK silicon, distribute the sealing compound evenly with your finger.
Important: The best results are achieved if you first moisten your fingers with soapy water (dish detergent and water).



2 First screw the two groove sections together with three 90°-connecting pieces. Then mount this angular structure on the wall.



4 Place the long sealing sections with the broad side outwards on the frame sections.

Hint: Fasten the sealing sections with an adhesive strip or – as in the figure to the left – with a residual piece of the frame section.



6 After completely mounting the first row of blocks, place the two appropriately shortened "long sealing sections" with the broad side facing outward on top of your first X-BLOCK row.

Now assemble a second row of blocks. Once again a tongue section piece will help with placing the blocks.



7 After completely assembling the top row of blocks, place the last two "long sealing sections" onto it.

Then insert the frame section into the previously assembled 90°-connecting piece and under gentle pressure let it rest in on the top X-BLOCK row.



9 Screw together the sides of the 90°-connecting pieces, whose last inserted frame sections were not yet screwed on.

Hint: Cover the screw heads, which must be completely level in the pre-drilled section, with silicon.



Use in wet and external areas
The X-BLOCK can be used in wet areas. The assembly steps are largely identical to those described. However, instead of using the sealing sections, use X-BLOCK silicon to seal the gaps. Length of the frame section = number of X-BLOCKS x 199mm+2mm



13 Spread the X-BLOCK silicon on both sides – both vertically and horizontally. After the required drying period (about 24 hours) the wall is finished.